

TORENI
H A R D W A R E

Engineered for the Modern Mind

INDEX

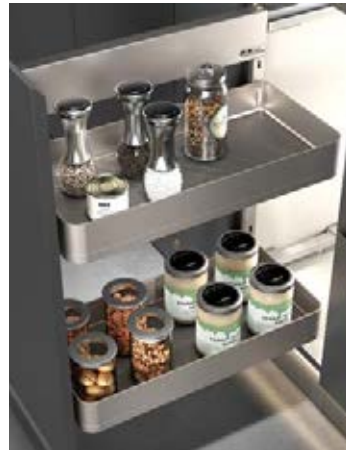
■ Spice & Bottle Racks	Page 3
■ Corner Units	Page 13
■ Pull-Down Baskets and Lift-Up Glass Door	Page 25
■ Pantry Units	Page 37

■ Spice & Bottle Racks



Pull-Out Spice / Bottle Rack

Side Mount - Elan



The Elan side-mounted pull-out system offers efficient storage for spices, bottles, and other small kitchen items. Designed for optimized cabinet utilization, it features smooth functionality and a clean, modern aesthetic. The champagne gold finish adds a refined accent, complementing a wide range of contemporary kitchen designs. Available in multiple sizes to accommodate various cabinet layouts and installation requirements.



150mm / 5-7/8"



200mm / 7-7/8"



250mm / 9-7/8"



300mm / 11-3/4"

FEATURES

- **Trays:** Anti-slip design with adjustable height
- **Slides:** Smooth push-and-pull operation with soft close
- **Installation:** Side mount, can be installed on either left or right side
- **Material:** Reinforced carbon steel + High-density polymer
- **Colour:** Champagne gold

SKU	Mounting	Cabinet W (mm/in)	Product Sizes W x D x H (mm/in)
AACG03150	Side Mount	≥ 150 / 5-7/8	108 x 461 x 603 / 4-1/4 x 18-1/8 x 23-3/4
AACG03200	Side Mount	≥ 200 / 7-7/8	158 x 461 x 603 / 6-1/4 x 18-1/8 x 23-3/4
AACG03300	Side Mount	≥ 300 / 11-13/16	258 x 461 x 603 / 10-3/16 x 18-1/8 x 23-3/4



Pull-Out Spice / Bottle Rack

Side Mount - Crystal



The Crystal pull-out system offers efficient storage for spices, sauces, and bottles within base cabinets. Constructed from durable steel with elegant glass sides, it features smooth sliding and soft-closing functionality. Designed for narrow cabinets, it maximizes space while maintaining a refined, modern appearance.



150mm / 5-7/8"



200mm / 7-7/8"



300mm / 11-3/4"

FEATURES

- **Trays:** Anti-slip design with adjustable height
- **Slides:** Smooth push-and-pull operation with soft close
- **Installation:** Side mount, can be installed on either left or right side
- **Material:** Reinforced carbon steel with smoke acrylic
- **Colour:** Dark grey

SKU	Mounting	Cabinet W (mm/in)	Product Sizes W x D x H (mm/in)
AADG01150	Side Mount	≥ 150 / 5-7/8	108 x 461 x 565 / 4-1/4 x 18-1/8 x 22-1/4
AADG01200	Side Mount	≥ 200 / 7-7/8	158 x 461 x 603 / 6-1/4 x 18-1/8 x 23-3/4
AADG01300	Side Mount	≥ 300 / 11-13/16	258 x 461 x 603 / 10-3/16 x 18-1/8 x 23-3/4



Pull-Out Spice / Bottle Rack

Side Mount - Slim

Upgrade your kitchen organization with the Pull Out Spice / Bottle Rack Side Mount – Slim. Designed for flexibility and smooth performance, this pull-out system keeps your spices, bottles, and cooking essentials neatly arranged and easy to access. The sleek, side-mounted design maximizes cabinet space while adding a refined, modern touch to your kitchen. Available in a variety of sizes to fit different cabinet configurations and storage needs.



FEATURES

- **Trays:** Anti-slip design with adjustable height
- **Slides:** Smooth push-and-pull operation with soft close
- **Installation:** Side mount, can be installed on either left or right side
- **Material:** Reinforced carbon steel
- **Colour:** Dark grey

SKU	Mounting	Cabinet W (mm/in)	Product Sizes W x D x H (mm/in)
AADG02150	Side Mount	≥ 150 / 5-7/8	108 x 461 x 603 / 4-1/4 x 18-1/8 x 23-3/4
AADG02200	Side Mount	≥ 200 / 7-7/8	158 x 461 x 603 / 6-1/4 x 18-1/8 x 23-3/4
AADG02300	Side Mount	≥ 300 / 11-13/16	258 x 461 x 603 / 10-3/16 x 18-1/8 x 23-3/4



Pull-Out Spice / Bottle Rack

Side Mount - Slim

Keep your kitchen organized and essentials within reach. This minimalist side-mounted pull-out rack features a sleek design with dividers for easy separation of spices, bottles, and condiments. Smooth sliding operation and a space-saving profile make it a practical and stylish addition to any cabinet.



FEATURES

- **Trays:** Anti-slip design with adjustable height
- **Slides:** Smooth push-and-pull operation with soft close
- **Installation:** Side mount, can be installed on either left or right side
- **Material:** Reinforced carbon steel
- **Colour:** Dark grey

SKU	Mounting	Cabinet W (mm/in)	Product Sizes W x D x H (mm/in)
AADG04150	Side Mount	≥ 150 / 5-7/8	108 x 470 x 513 / 4-1/4 x 18-1/2 x 20-3/16

■ Corner Units



Pull-Out Blind Corner Cabinet Organizer – Crystal

Maximize your blind corner cabinet storage with the Pull Out Blind Corner Cabinet Organizer – Crystal. Designed for easy access to hard-to-reach spaces, this organizer features a smooth pull-out tray that keeps kitchen essentials within reach. Its durable construction and anti-slip design make it both practical and stylish for any kitchen.



FEATURES

- **Trays:** Anti-slip design with adjustable height
- **Slides:** Smooth push-and-pull operation with soft close
- **Installation:** Bottom mount, can be installed on either left or right side
- **Material:** Reinforced carbon steel with smoke acrylic
- **Colour:** Dark grey

SKU	Opening W (mm/in)	Cabinet W (mm/in)	Product Sizes W x D x H (mm/in)
ABDG01	≥ 407 / 16	900-1000 / 35-7/16 - 39-3/8	608 x 455 x 584 / 23-15/16 x 17-15/16 x 23



Pull-Out Blind Corner Cabinet Organizer – Slim

Make the most of your hard-to-reach corner cabinets with the Pull Out Blind Corner Cabinet Organizer – Slim. Designed to fit narrow blind corner spaces, this organizer features a smooth sliding pull-out tray that keeps kitchen essentials easily accessible. Its anti-slip surface and durable construction ensure that items stay secure while adding a sleek, functional touch to your kitchen.



FEATURES

- **Trays:** Anti-slip design with adjustable height
- **Slides:** Smooth push-and-pull operation with soft close
- **Installation:** Bottom mount, can be installed on either left or right side
- **Material:** Reinforced carbon steel
- **Colour:** Dark grey

SKU	Opening W (mm/in)	Cabinet W (mm/in)	Product Sizes W x D x H (mm/in)
ABDG02	≥ 407 / 16	900-1000 / 35-7/16 - 39-3/8	608 x 455 x 584 / 23-15/16 x 17-15/16 x 23



Pull-Out Blind Corner Cabinet Organizer – Elan

Enhance your kitchen's storage with the Pull Out Blind Corner Cabinet Organizer – Elan in elegant Champagne Gold. Designed for blind corner cabinets, this organizer features a smooth sliding pull-out tray that provides easy access to items tucked away in hard-to-reach corners. Its anti-slip surface keeps kitchen essentials secure, while the sleek Champagne Gold finish adds a touch of modern sophistication to your space.



FEATURES

- **Trays:** Anti-slip design with adjustable height
- **Slides:** Smooth push-and-pull operation with soft close
- **Installation:** Bottom mount, can be installed on either left or right side
- **Material:** Reinforced carbon steel + High-density polymer
- **Colour:** Champagne gold

SKU	Opening W (mm/in)	Cabinet W (mm/in)	Product Sizes W x D x H (mm/in)
ABCG03	≥ 407 / 16	900-1000 / 35-7/16 - 39-3/8	608 x 455 x 584 / 23-15/16 x 17-15/16 x 23



Leman Magic Corner - Elan

Optimize your corner cabinet storage with the Leman Magic Corner - Elan in Champagne Gold. This pull-out Magic Corner unit features a smooth sliding and folding mechanism that brings hard-to-reach items within easy access. Its anti-slip trays keep kitchen essentials secure, while the slim profile ensures a space-efficient and stylish solution. Available in left-opening and right-opening models, it provides the perfect fit for any corner cabinet layout.



FEATURES

- **Trays:** Anti-slip design with adjustable height
- **Slides & Mechanism:** Smooth sliding and folding operation with soft open/close
- **Installation:** Available in left-opening and right-opening models to match your cabinet layout
- **Material:** Reinforced carbon steel + High-density polymer
- **Colour:** Champagne gold

SKU	Opening W (mm/in)	Cabinet W (mm/in)	Product Sizes W x D x H (mm/in)
ABCG08750L	≥ 455 / 18	900-1000 / 35-7/16 - 39-3/8	805 x 480 x 600-750 / 31-11/16 x 18-7/8 x 23-5/8 to 29-1/4
ABCG08750R	≥ 455 / 18	900-1000 / 35-7/16 - 39-3/8	805 x 480 x 600-750 / 31-11/16 x 18-7/8 x 23-5/8 to 29-1/4



Leman Magic Corner – Slim

Maximize your corner cabinet storage with the Leman Magic Corner – Slim. Designed for tight spaces, this clever pull-out organizer makes use of hard-to-reach corners with a smooth sliding and folding mechanism. Its anti-slip trays keep kitchen essentials secure, while the slim profile ensures a space-efficient solution for modern kitchens. Available in a sleek finish, it combines functionality and style for an effortless kitchen organization upgrade.



FEATURES

- **Trays:** Anti-slip design with adjustable height
- **Slides & Mechanism:** Smooth sliding and folding operation with soft open/close
- **Installation:** Available in left-opening and right-opening models to match your cabinet layout
- **Material:** Reinforced carbon steel
- **Colour:** Dark grey

SKU	Opening W (mm/in)	Cabinet W (mm/in)	Product Sizes W x D x H (mm/in)
ABDG07750L	≥ 455 / 18	900-1000 / 35-7/16 - 39-3/8	805 x 480 x 600-750 / 31-11/16 x 18-7/8 x 23-5/8 to 29-1/4
ABDG07750R	≥ 455 / 18	900-1000 / 35-7/16 - 39-3/8	805 x 480 x 600-750 / 31-11/16 x 18-7/8 x 23-5/8 to 29-1/4

■ Pull Down Baskets and
Lift-up Glass Door



Pull-Down Lift Basket for Upper Cabinets - Crystal

Enhance your kitchen's functionality with the Pull Down Lift Basket - Crystal. Designed for upper cabinets, this elegant lift system allows you to bring items down smoothly and safely with a gentle pull of the handle. Its precision-balanced mechanism ensures effortless motion and stable operation, making it easy to access hard-to-reach storage areas. Crafted with premium materials and a modern finish, the pull down basket blends practical innovation with contemporary kitchen design, offering convenience, organization, and style in one refined solution.



FEATURES

- **Trays:** Anti-slip design keeps kitchen essentials securely in place
- **Mechanism:** Smooth & silent pull-down operation with minimal effort
- **Safety:** Soft-stop function prevents sudden drops and ensures safe handling
- **Modern Design:** Sleek finish that complements contemporary kitchen interiors
- **Material:** Reinforced carbon steel with tempered glass
- **Colour:** Dark grey

SKU	Cabinet W (mm/in)	Product Sizes W x D x H (mm/in)	Operation
BADG01700	≥ 700 / 27-9/16	662 x 265 x 546 / 26-1/16 x 10-1/16 x 21-1/2	Manual
BADG01800	≥ 800 / 31-1/2	762 x 265 x 546 / 30 x 10-1/16 x 21-1/2	Manual
BADG01900	≥ 900 / 35-7/16	862 x 265 x 546 / 33-15/16 x 10-1/16 x 21-1/2	Manual



Pull-Down Lift Basket for Upper Cabinets - Slim

Upgrade your kitchen organization with the Pull Down Lift Basket – Slim. Designed for upper cabinets, this sleek pull-down system brings convenience and accessibility to compact spaces. Its slim profile makes it ideal for narrower cabinets, while the smooth lift mechanism allows effortless lowering and raising of stored items. Crafted with durable steel and finished in a refined modern tone, the Slim model combines practical design with elegant simplicity, making it a perfect addition to contemporary kitchens that value both style and function.



FEATURES

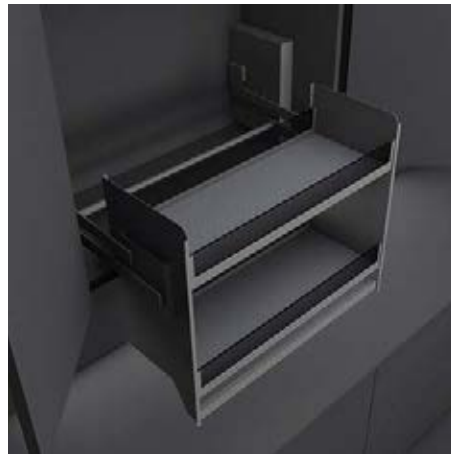
- **Trays:** Anti-slip design keeps kitchen essentials securely in place
- **Mechanism:** Smooth & silent pull-down operation with minimal effort
- **Safety:** Soft-stop function prevents sudden drops and ensures safe handling
- **Modern Design:** Sleek finish that complements contemporary kitchen interiors
- **Material:** Reinforced carbon steel
- **Colour:** Dark grey

SKU	Cabinet W (mm/in)	Product Sizes W x D x H (mm/in)	Operation
BADG02700	≥ 700 / 27-9/16	662 x 265 x 546 / 26-1/16 x 10-1/16 x 21-1/2	Manual
BADG02800	≥ 800 / 31-1/2	762 x 265 x 546 / 30 x 10-1/16 x 21-1/2	Manual
BADG02900	≥ 900 / 35-7/16	862 x 265 x 546 / 33-15/16 x 10-1/16 x 21-1/2	Manual



Smart Pull-Down Lift Basket for Upper Cabinets – Crystal

Elevate your kitchen storage with the Smart Pull Down Lift Basket – Crystal. This intelligent, electric lift basket is designed for upper cabinets and smoothly lowers at the slightest touch, bringing hard-to-reach items within effortless reach. Combining convenience, safety, and sleek modern style, it transforms your kitchen into a smart, functional space where accessing essentials is as easy as a gentle touch.



FEATURES

- **Trays:** Anti-slip design to securely hold kitchen essentials
- **Mechanism:** Smooth, electric-powered operation with LED light activated by a gentle touch
- **Space Optimization:** Pull-down design maximizes upper cabinet accessibility
- **Safety:** Soft-stop function prevents sudden drops and ensures safe handling
- **Modern Design:** Sleek finish that complements contemporary kitchen interiors
- **Quiet Operation:** Motor runs silently for a peaceful kitchen experience
- **Material:** Reinforced carbon steel with tempered glass
- **Colour:** Dark grey



SKU	Cabinet W (mm/in)	Product Sizes W x D x H (mm/in)	Operation
BBDG02700S	≥ 700 / 27-9/16	664 x 260 x 590 / 26-1/8 x 10-1/4 x 23-1/4	Electric
BBDG02800S	≥ 800 / 31-1/2	764 x 260 x 590 / 30-1/16 x 10-1/4 x 23-1/4	Electric
BBDG02900S	≥ 900 / 35-7/16	864 x 260 x 590 / 34 x 10-1/4 x 23-1/4	Electric



Smart Elevator Lift Basket for Upper Cabinets – Crystal

Upgrade your kitchen storage with the Smart Elevator Lift Basket – Crystal. Designed for upper cabinets, this intelligent, electric lift smoothly descends at a gentle touch, bringing hard-to-reach items within easy reach. Combining convenience, safety, and modern design, it enhances your kitchen’s functionality while maintaining a sleek, contemporary aesthetic.



FEATURES

- **Trays:** Anti-slip design to securely hold kitchen essentials
- **Mechanism:** Smooth, electric-powered operation with LED light activated by a single touch
- **Space Optimization:** Design to maximizes upper cabinet accessibility
- **Safety:** Soft-stop function prevents sudden drops and ensures safe handling
- **Modern Design:** Sleek finish that complements contemporary kitchen interiors
- **Quiet Operation:** Motor runs silently for a peaceful kitchen experience
- **Material:** Reinforced carbon steel with tempered glass
- **Colour:** Dark grey



SKU	Cabinet W (mm/in)	Product Sizes W x D x H (mm/in)	Operation
BBDG01700S	≥ 700 / 27-9/16	697 x 264 x 665 / 27-7/16 x 10-3/8 x 26-3/16	Electric
BBDG01800S	≥ 800 / 31-1/2	797 x 264 x 665 / 31-3/8 x 10-3/8 x 26-3/16	Electric
BBDG01900S	≥ 900 / 35-7/16	897 x 264 x 665 / 35-5/16 x 10-3/8 x 26-3/16	Electric



Smart Electric Lift-Up Glass Door

Experience modern convenience and sleek design with the Smart Electric Lift-Up Door for Upper Cabinets. With just a touch, the glass panels gently folds upward, giving you effortless access to your cabinet contents. Equipped with built-in lighting, it illuminates your storage for better visibility and a stylish touch. Powered by advanced electric technology, it opens and closes smoothly and quietly, combining practicality with elegance. Designed for contemporary kitchens, the Smart Electric Lift-Up Door keeps your upper cabinets organized while adding sophistication, durability, and everyday convenience to your space.



FEATURES

- **Touch-Activated Operation:** With a simple touch, the glass panels fold upward effortlessly for easy access.
- **Built-In Lighting:** Integrated LED lighting illuminates the cabinet interior for better visibility and a modern look.
- **Smooth Electric Mechanism:** Advanced motor ensures quiet and seamless opening and closing.
- **Modern Aesthetics:** Sleek glass shutter design complements contemporary kitchen interiors.
- **Safe & Reliable:** Engineered for stability and secure operation every time.
- **Colour:** Black / White



SKU	Cabinet W (mm/in)	Product Sizes W x D x H (mm/in)	Operation
BCB01800S	≥ 800 / 31-1/2	762 x 132 x 680 / 30 x 5-3/16 x 26-3/4	Electric
BCB01900S	≥ 900 / 35-7/16	862 x 132 x 680 / 33-15/16 x 5-3/16 x 26-3/4	Electric
BCW01800S	≥ 800 / 31-1/2	762 x 132 x 680 / 30 x 5-3/16 x 26-3/4	Electric
BCW01900S	≥ 900 / 35-7/16	862 x 132 x 680 / 33-15/16 x 5-3/16 x 26-3/4	Electric

■ Pantry Units



Tandem Open-Out Pantry – Crystal

Elevate your pantry with elegance and clarity. The Tandem Open Out Pantry Unit features metal frame with glass-sided baskets that glide out smoothly, offering a full view of every item inside. Designed with durable materials and a soft-close mechanism, it combines luxury with practicality, keeping your essentials neatly organized and beautifully displayed. Perfect for showcasing canned goods, spices, and daily staples.



FEATURES

- **Baskets:** Smoke acrylic-sided adjustable baskets with anti-slip base for secure storage and clear visibility
- **Operation:** Tandem open-out system pulls all baskets forward simultaneously for full access
- **Slides:** Heavy-duty synchronized slides with smooth push-and-pull action and soft-close damping
- **Installation:** Cabinet door-mounted; compatible with left or right door opening
- **Material:** Reinforced carbon steel with smoke acrylic
- **Colour:** Dark grey

SKU	Cabinet W (mm/in)	Cabinet H (mm/in)	Product Sizes W x D x H (mm/in)	Layer
CADG014504	≥ 450 / 17-11/16	≥ 1400 / 55-1/8	390 x 500 x 1268 / 15-3/8 x 19-11/16 x 49-15/16	4
CADG014505	≥ 450 / 17-11/16	≥ 1700 / 67	390 x 500 x 1564 / 15-3/8 x 19-11/16 x 61-9/16	5
CADG014506	≥ 450 / 17-11/16	≥ 2000 / 83-1/4	390 x 500 x 1860 / 15-3/8 x 19-11/16 x 73-1/4	6
CADG016004	≥ 600 / 23-5/8	≥ 1400 / 55-1/8	540 x 500 x 1268 / 21-1/4 x 19-11/16 x 49-15/16	4
CADG016005	≥ 600 / 23-5/8	≥ 1700 / 67	540 x 500 x 1564 / 21-1/4 x 19-11/16 x 61-9/16	5
CADG016006	≥ 600 / 23-5/8	≥ 2000 / 83-1/4	540 x 500 x 1860 / 21-1/4 x 19-11/16 x 73-1/4	6



Tandem Open-Out Pantry – Slim

Bring strength and efficiency to your pantry organization. The Tandem Open Out Pantry Unit comes with sturdy metal frame and baskets that slide out effortlessly for complete visibility and easy access. Built to last with a smooth soft-close system, it offers durability, functionality, and a refined finish that complements any kitchen style. Ideal for storing canned goods, spices, and everyday essentials.



FEATURES

- **Baskets:** Metal-sided adjustable baskets with anti-slip base
- **Operation:** Tandem open-out system pulls all baskets forward simultaneously for full access
- **Slides:** Heavy-duty synchronized slides with smooth push-and-pull action and soft-close damping
- **Installation:** Cabinet door-mounted; compatible with left or right door opening
- **Material:** Reinforced carbon steel
- **Colour:** Dark grey

SKU	Cabinet W (mm/in)	Cabinet H (mm/in)	Product Sizes W x D x H (mm/in)	Layer
CADG024504	≥ 450 / 17-11/16	≥ 1400 / 55-1/8	390 x 500 x 1268 / 15-3/8 x 19-11/16 x 49-15/16	4
CADG024505	≥ 450 / 17-11/16	≥ 1700 / 67	390 x 500 x 1564 / 15-3/8 x 19-11/16 x 61-9/16	5
CADG024506	≥ 450 / 17-11/16	≥ 2000 / 83-1/4	390 x 500 x 1860 / 15-3/8 x 19-11/16 x 73-1/4	6
CADG026004	≥ 600 / 23-5/8	≥ 1400 / 55-1/8	540 x 500 x 1268 / 21-1/4 x 19-11/16 x 49-15/16	4
CADG026005	≥ 600 / 23-5/8	≥ 1700 / 67	540 x 500 x 1564 / 21-1/4 x 19-11/16 x 61-9/16	5
CADG026006	≥ 600 / 23-5/8	≥ 2000 / 83-1/4	540 x 500 x 1860 / 21-1/4 x 19-11/16 x 73-1/4	6



Dispensa Pull-Out Pantry Unit - Crystal

Organize your kitchen with style and ease. The Dispensa Pull Out Pantry – Crystal features glass-sided baskets that glide smoothly, giving you full visibility of all your pantry items. Built with durable materials and a soft-close mechanism, it keeps everything secure while adding a touch of elegance to your kitchen. Perfect for storing canned goods, spices, and everyday essentials, it turns pantry organization into a simple and sophisticated experience.



FEATURES

- **Baskets:** Smoke acrylic-sided adjustable baskets with anti-slip base for secure storage and clear visibility
- **Operation:** Synchronized pull-out system for full access
- **Slides:** Heavy-duty synchronized slides with smooth push-and-pull action and soft-close damping
- **Installation:** Top & bottom mounting with adjustable height
- **Material:** Reinforced carbon steel with smoke acrylic
- **Colour:** Dark grey

SKU	Cabinet W (mm/in)	Cabinet H (mm/in)	Product Sizes W x D x H (mm/in)	Layer
CADG033004	≥ 300 / 11-13/16	≥ 1350-1530 / 53-1/8 to 60-1/4	250 x 495 x 1330-1530 / 9-13/16 x 19-1/2 x 52-3/8 to 60-1/4	4
CADG033005	≥ 300 / 11-13/16	≥ 1650-1830 / 64-15/16 to 72-1/16	250 x 495 x 1630-1830 / 9-13/16 x 19-1/2 x 64-3/16 to 72	5
CADG033006	≥ 300 / 11-13/16	≥ 1950-2120 / 76-3/4 to 83-7/16	250 x 495 x 1920-2120 / 9-13/16 x 19-1/2 x 75-9/16 to 83-7/16	6
CADG034004	≥ 400 / 15-3/4	≥ 1350-1530 / 53-1/8 to 60-1/4	346 x 495 x 1330-1530 / 13-5/8 x 19-1/2 x 52-3/8 to 60-1/4	4
CADG034005	≥ 400 / 15-3/4	≥ 1650-1830 / 64-15/16 to 72-1/16	346 x 495 x 1630-1830 / 13-5/8 x 19-1/2 x 64-3/16 to 72	5
CADG034006	≥ 400 / 15-3/4	≥ 1950-2120 / 76-3/4 to 83-7/16	346 x 495 x 1920-2120 / 13-5/8 x 19-1/2 x 75-9/16 to 83-7/16	6



Dispensa Pull-Out Pantry Unit - Slim

Transform your kitchen storage with the tall Dispensa Pull Out Pantry – Slim column. Crafted entirely from durable steel, this sleek organizer glides out effortlessly, giving you quick access to all your pantry essentials. The soft-close mechanism ensures smooth and quiet operation, while its slim design fits perfectly in compact cabinets. Ideal for neatly storing cans, spices, and daily items, it combines strength, efficiency, and modern elegance in one smart solution.



FEATURES

- **Baskets:** Metal-sided adjustable baskets with anti-slip base
- **Operation:** Synchronized pull-out system for full access
- **Slides:** Heavy-duty synchronized slides with smooth push-and-pull action and soft-close damping
- **Installation:** Top & bottom mounting with adjustable height
- **Material:** Reinforced carbon steel
- **Colour:** Dark grey

SKU	Cabinet W (mm/in)	Cabinet H (mm/in)	Product Sizes W x D x H (mm/in)	Layer
CADG043004	≥ 300 / 11-13/16	≥ 1350-1530 / 53-1/8 to 60-1/4	250 x 495 x 1330-1530 / 9-13/16 x 19-1/2 x 52-3/8 to 60-1/4	4
CADG043005	≥ 300 / 11-13/16	≥ 1650-1830 / 64-15/16 to 72-1/16	250 x 495 x 1630-1830 / 9-13/16 x 19-1/2 x 64-3/16 to 72	5
CADG043006	≥ 300 / 11-13/16	≥ 1950-2120 / 76-3/4 to 83-7/16	250 x 495 x 1920-2120 / 9-13/16 x 19-1/2 x 75-9/16 to 83-7/16	6
CADG044004	≥ 400 / 15-3/4	≥ 1350-1530 / 53-1/8 to 60-1/4	346 x 495 x 1330-1530 / 13-5/8 x 19-1/2 x 52-3/8 to 60-1/4	4
CADG044005	≥ 400 / 15-3/4	≥ 1650-1830 / 64-15/16 to 72-1/16	346 x 495 x 1630-1830 / 13-5/8 x 19-1/2 x 64-3/16 to 72	5
CADG044006	≥ 400 / 15-3/4	≥ 1950-2120 / 76-3/4 to 83-7/16	346 x 495 x 1920-2120 / 13-5/8 x 19-1/2 x 75-9/16 to 83-7/16	6



Dispensa Pull-Out Pantry Unit - Elan

Elevate your kitchen organization with the tall Dispensa Pull Out Pantry – Elan in Champagne Gold. Built entirely from high-quality steel, this streamlined unit slides out smoothly, providing effortless access to all your pantry essentials. Its soft-close mechanism ensures silent, seamless operation, while the slim profile fits perfectly in narrow cabinets. Ideal for storing cans, spices, and everyday goods, it delivers a perfect balance of durability, functionality, and contemporary style in one refined design.



FEATURES

- **Baskets:** Height adjustable baskets with anti-slip base
- **Operation:** Synchronized pull-out system for full access
- **Slides:** Heavy-duty synchronized slides with smooth push-and-pull action and soft-close damping
- **Installation:** Top & bottom mounting with adjustable height
- **Material:** Reinforced carbon steel + High-density polymer
- **Colour:** Champagne gold

SKU	Cabinet W (mm/in)	Cabinet H (mm/in)	Product Sizes W x D x H (mm/in)	Layer
CACG053004	≥ 300 / 11-13/16	≥ 1350-1530 / 53-1/8 to 60-1/4	250 x 495 x 1330-1530 / 9-13/16 x 19-1/2 x 52-3/8 to 60-1/4	4
CACG053005	≥ 300 / 11-13/16	≥ 1650-1830 / 64-15/16 to 72-1/16	250 x 495 x 1630-1830 / 9-13/16 x 19-1/2 x 64-3/16 to 72	5
CACG053006	≥ 300 / 11-13/16	≥ 1950-2120 / 76-3/4 to 83-7/16	250 x 495 x 1920-2120 / 9-13/16 x 19-1/2 x 75-9/16 to 83-7/16	6
CACG054004	≥ 400 / 15-3/4	≥ 1350-1530 / 53-1/8 to 60-1/4	346 x 495 x 1330-1530 / 13-5/8 x 19-1/2 x 52-3/8 to 60-1/4	4
CACG054005	≥ 400 / 15-3/4	≥ 1650-1830 / 64-15/16 to 72-1/16	346 x 495 x 1630-1830 / 13-5/8 x 19-1/2 x 64-3/16 to 72	5
CACG054006	≥ 400 / 15-3/4	≥ 1950-2120 / 76-3/4 to 83-7/16	346 x 495 x 1920-2120 / 13-5/8 x 19-1/2 x 75-9/16 to 83-7/16	6

TORENI
H A R D W A R E



416.841.7766

info@toreni.ca

www.toreni.ca

113-7250 Keele Street

Concord, ON L4K 1Z8